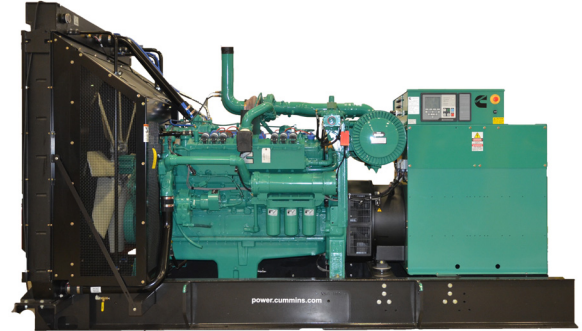




## Specification sheet

# Gaseous fuel generator set

400 kW - 500 kW 60 Hz



## Description

You can count on the 400-500 kW natural gas generator set (GenSet) for the reliability, quality, and dependability that is genuine Cummins performance. EPA-certified, this fully-integrated power generation system provides optimum performance and versatility for stationary standby power applications.

## Features

- Over 100 years of Cummins power generation technology and innovation
- Listed to UL 2200 and CSA standards for all low voltage models
- Stamford rugged and reliable alternator with state-of-the-art technology
- Two-year base warranty supported by a worldwide Cummins twenty-four hour, seven days-a-week, distributor network
- Accepts 100% rated load in a single step
- Capable of meeting NFPA 110 Type 10 for Level 1 emergency or standby power supply systems (EPSSs) when installed and operated per Cummins and NFPA guidelines
- Standard Power Command Control (PCC) 3300 technology provides digital (precise) frequency and voltage regulation
- Efficient and convenient operation monitoring and control options:
  - Modbus over the Internet (monitor and control)
  - Remote HMI (monitor and control)

Model	Power rating60 Hz kW (kVa)	Emissions	Data sheet
	Standby		
C400N6	400 (500)	EPA-certified for stationary emergency and non-emergency applications	NAD-C400N6
C450N6	450 (562)		NAD-C450N6
C500N6B	500 (625)		NAD-C500N6B

## Engine specifications

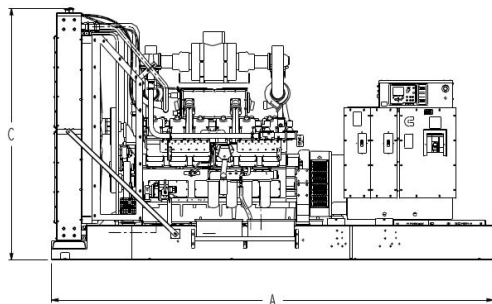
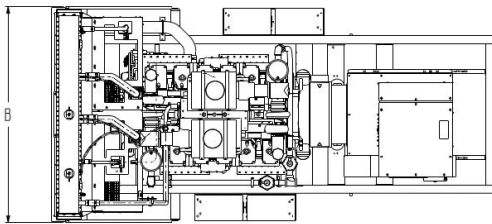
Base engine	Cummins GTA28E
Displacement	1709 in <sup>3</sup> (28 L)
Minimum battery capacity	1800 amps at minimum ambient temperature of 0 °F (-18 °C)
Battery charging alternator	70 amps
Starting voltage	24-volt, negative ground
Standard cooling system	104 °F (40 °C)

## Alternator specifications

Design	Brushless, 4-pole, drip-proof revolving field
Stator	2/3 pitch
Rotor	Direct-coupled by flexible disc
Insulation system	Class H per NEMA MG1-1.65 or better
Standard temperature rise*	125 °C
Exciter type	Permanent Magnet Generator (PMG)
Phase rotation	A (U), B (V), C (W)
Alternator cooling	Direct-drive centrifugal blower

\* For UL ratings, refer to temperature rise at 120 °C or below, and ambient temperature up to 40 °C

## Outline drawing



This outline drawing is for reference only.  
**Do not use for installation design.**

All models	Dim "A" in. (cm)	Dim "B" in. (cm)	Dim "C" in. (cm)
Open set	166 (422)	82 (208)	98 (249)
Weather-protective enclosure	219 (556)	90 (229)	126 (320)
Sound-attenuated Level I & II enclosure	305 (775)	90 (229)	126 (320)

**NOTE:** Consult drawings for applicable weights.  
Contact the factory for additional information.

Level 3 enclosures are physically dimensioned the same as the Level 1 and Level 2 enclosures. Level 3 enclosures provide an estimated 2-3 dBA of additional sound attenuation by means of insulated baffles in the intake/exhaust hoods and 3 in insulation in the enclosure body.

## GenSet options and accessories

### Engine

- 240/480 V, 4000 W coolant heaters (480 field-wired)
- 120/208/240 V, 300 W lube oil heater

### Alternator

- 80 °C rise
- 105 °C rise
- 125 °C rise
- 120/240 V, 200 W anti-condensation heater

**Fuel system** - flexible fuel connector and fuel strainer

### Exhaust system

- GenSet mounted muffler (enclosure models, only)
- Critical grade silencer

### Generator set

- Batteries
- Battery charger - 120/208/240 V, 10A
- Main line circuit breaker
- Electronically-operated (E.O.) generator breaker
- PowerCommand Network I/O module
- PowerCommand Network Aux 101, 102 module
- Remote control HMI with extension harness
- Remote annunciator panel
- Spring isolators
- Audible alarm
- Oil maintainer
- Weather-protective enclosure with silencer
- Sound-attenuated enclosure Level I and Level II with silencer
- Warranty - five-year standby including parts, labor, and travel

## Applicable codes and standards



The Underwriters Laboratory (UL) 2200 Listing is a comprehensive safety standard encompassing the design, construction, and performance of stationary GenSets.



CSA Group tests products under a formal process to ensure that they meet the safety and/or performance requirements of applicable standards. This GenSet is certified to: CSA 22.2 No. 100 Motors and Generators; CSA 22.2 No. 0.4-044 Bonding of Electrical Equipment; CSA 22.2 No. 14 Industrial Control Equipment; and CSA 22.2 No. 0 General Requirements - Canadian Electrical Code, Part II.



Engine is certified to Stationary Emergency and Non-Emergency U.S. EPA New Source Performance Standards (NSPS), 40 CFR 60 subpart JJJJ. U.S. applications must be applied per EPA regulations.



This product has been manufactured under the controls established by a Bureau Veritas Certification approved management system that conforms with ISO 9001:2015.