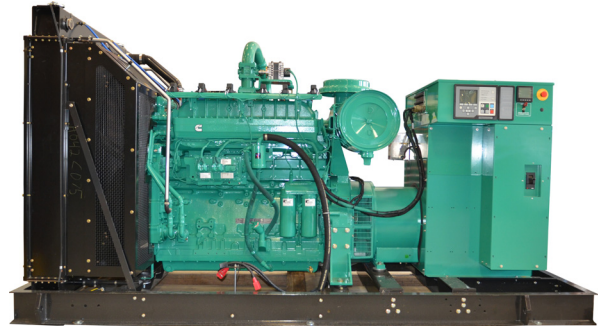




Specification sheet

Gaseous fuel generator set

350 kW 60 Hz



Description

You can count on the 350 kW natural gas generator set (GenSet) for the reliability, quality, and dependability that is genuine Cummins performance. EPA-certified, this fully-integrated power generation system provides optimum performance and versatility for stationary standby power applications.

Features

- Over 100 years of Cummins power generation technology and innovation
- Listed to UL 2200 and CSA standards for all low voltage models
- Stamford rugged and reliable alternator with state-of-the-art technology
- Two-year base warranty supported by a worldwide Cummins twenty-four hour, seven days-a-week, distributor network
- Accepts 100% rated load in a single step
- Capable of meeting NFPA 110 Type 10 for Level 1 emergency or standby power supply systems (EPSSs) when installed and operated per Cummins and NFPA guidelines
- Standard Power Command Control (PCC) 3300 technology provides digital (precise) frequency and voltage regulation
- Efficient and convenient operation monitoring and control options:
 - Modbus over the Internet (monitor and control)
 - Remote HMI (monitor and control)

Model	Power rating 60 Hz kW (kVa)	Emissions	Data sheet
	Standby		
C350N6	350 (437)	EPA-certified for stationary emergency standby applications	NAD-C350N6

Engine specifications

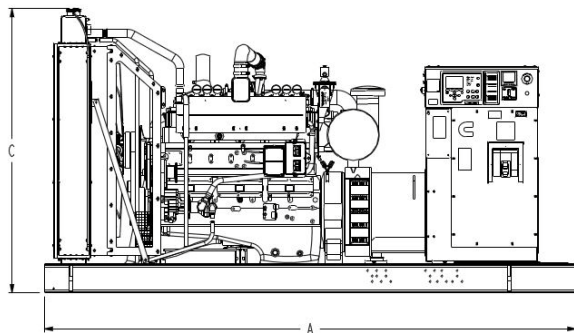
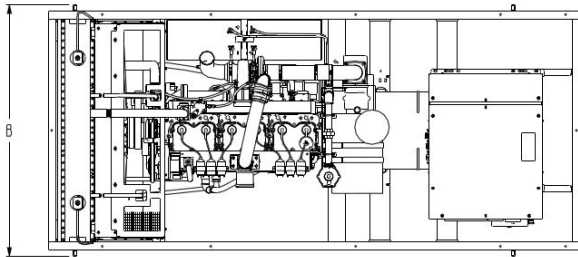
Base engine	Cummins KTA 19G
Displacement	1159 in ³ (19 L)
Minimum battery capacity	900 amps at minimum ambient temperature of 0 °F (-18 °C)
Battery charging alternator	70 amps
Starting voltage	24-volt, negative ground
Standard cooling system	104 °F (40 °C)

Alternator specifications

Design	Brushless, 4-pole, drip-proof revolving field
Stator	2/3 pitch
Rotor	Direct-coupled by flexible disc
Insulation system	Class H per NEMA MG1-1.65 or better
Standard temperature rise*	125 °C
Exciter type	Permanent Magnet Generator (PMG)
Phase rotation	A (U), B (V), C (W)
Alternator cooling	Direct-drive centrifugal blower

* For UL ratings, refer to temperature rise at 120 °C or below, and ambient temperature up to 40 °C

Outline drawing



All models	Dim "A" in. (cm)	Dim "B" in. (cm)	Dim "C" in. (cm)
Open set	147 (373)	69 (175)	82 (497)
Weather-protective enclosure	183 (465)	70 (178)	94 (239)
Sound-attenuated Level I & II enclosure	281 (714)	70 (178)	94 (239)

NOTE: Consult drawings for applicable weights. Contact the factory for additional information.

This outline drawing is for reference only.
Do not use for installation design.

Level 3 enclosures are physically dimensioned the same as the Level 1 and Level 2 enclosures -- please refer to General Arrangement drawings on PowerSuite. L3 enclosures provide an estimated 2-3 dBA of additional sound attenuation by means of insulated baffles in the intake/exhaust hoods and 3in insulation in the enclosure body.

GenSet options and accessories

Engine

- 208 V, 3750 W coolant heaters (2) or 208 V, 4000 W (x1KHS) coolant heater
- 240/480 V, 4000 W coolant heaters (480 field-wired)
- 120/208/240 V, 300 W lube oil heater

Alternator

- 80 °C rise
- 105 °C rise
- 125 °C rise
- 120/240 V, 200 W anti-condensation heater

Fuel system - flexible fuel connector and fuel strainer

Exhaust system

- GenSet mounted muffler (enclosure models, only)
- Critical grade silencer
- Hospital grade silencer

Generator set

- Batteries
- Battery charger - 120/208/240 V, 10A
- Main line circuit breaker
- Electronically-operated (E.O.) generator breaker
- PowerCommand Network I/O module
- PowerCommand Network Aux 101, 102 module
- Remote control HMI with extension harness
- Remote annunciator panel
- Spring isolators
- Audible alarm
- Oil maintainer
- Weather-protective enclosure with silencer
- Sound-attenuated enclosure Level I and Level II with silencer
- Warranty - five-year standby including parts, labor, and travel

Applicable codes and standards



The Underwriters Laboratory (UL) 2200 Listing is a comprehensive safety standard encompassing the design, construction, and performance of stationary GenSets.



CSA Group tests products under a formal process to ensure that they meet the safety and/or performance requirements of applicable standards. This GenSet is certified to: CSA 22.2 No. 100 Motors and Generators; CSA 22.2 No. 0.4-044 Bonding of Electrical Equipment; CSA 22.2 No. 14 Industrial Control Equipment; and CSA 22.2 No. 0 General Requirements - Canadian Electrical Code, Part II.



Engine is certified to Stationary Emergency U.S. EPA New Source Performance Standards (NSPS), 40 CFR 60 subpart JJJJ. U.S. applications must be applied per EPA regulations.



This product has been manufactured under the controls established by a Bureau Veritas Certification approved management system that conforms with ISO 9001:2015.