



EBOSS™ 125kVA -HYBRID SYSTEM-

62/125 PRIME/PEAK
kVA POWER

20X

UP TO 20X THE
CYCLE LIFE OF
NMC/LFP BATTERIES



SAFE BATTERY
TECHNOLOGY
NO THERMAL RUNAWAY



WIDEST
TEMPERATURE
OPERATING RANGE

1Φ AND 3Φ

SIMULTANEOUS
OUTPUT
VOLTAGES



REMOTE ACCESS
MONITORING &
TRACKING



INDUSTRIAL
GRADE
INVERTERS



50 kWh
ULTRA
HIGH CYCLE
LITHIUM
TITANATE
OXIDE (LTO)
BATTERY CHEMISTRY

PERFORMANCE //

- 1 - 10" Touchscreen Control Panel
- 2 - Simul. Voltage Output Panel
- 3 - Emergency Stop Button
- 4 - Delta Demand Excitation™
- 5 - QuietTech™ Sound Attenuation
- 6 - Telematics Monitoring System

MAINTENANCE //

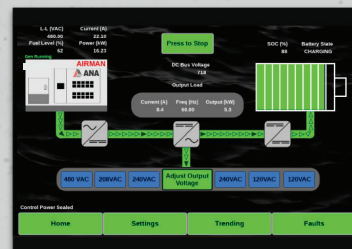
- 7 - Lift-off Door Hinges
- 8 - Ext. Fuel Tank Connections
- 9 - 110% Fluid Containment
- 10 - Service Extensions
- 11 - Fuel & Containment Drains
- 12 - Removable Trailer Fenders

CONSTRUCTION //

- 13 - Power-coated Steel Enclosure
- 14 - Stainless Steel Hardware
- 15 - Lockable Access Doors
- 16 - Automotive Door Seals
- 17 - 111 Gallon Fuel Tank
- 18 - Heavy-Duty Steel Trailer



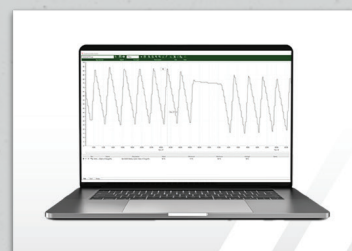
ISUZU® 4JJ1X
Tier 4 / CARB
Diesel Engine



1 | 10" Touchscreen Control Panel
with color display



2 | Simultaneous Voltage Output Panel
120V - 20A x 2 | 480/208V 3Φ Cam-Locks™



6 | Telematics Monitoring System
Remote access and monitoring of fuel,
runtime, GPS, load and more



8 | External Fuel Tank Connections
with 3-Way Selection Valve

IMPROVE FUEL ECONOMY // LOWER CARBON EMISSIONS // REDUCE NOISE LEVELS

THE INDUSTRY'S HIGHEST-QUALITY HYBRID POWER SYSTEMS

HYBRID SYSTEM MODEL

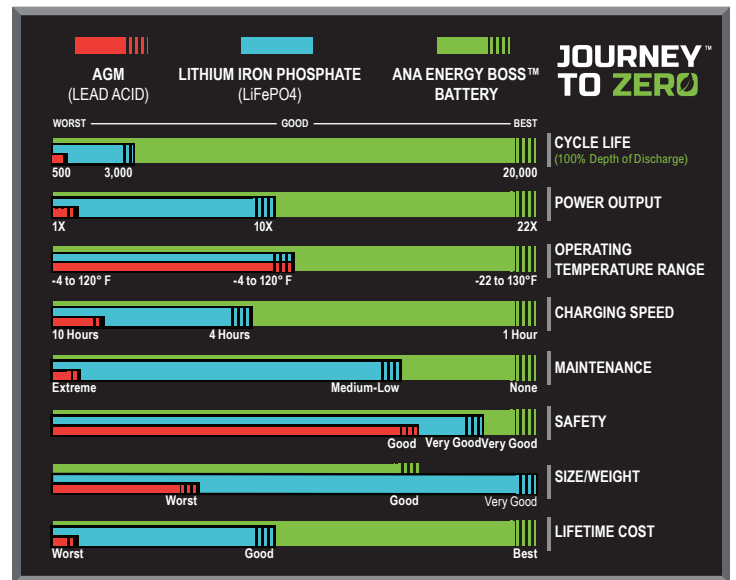
EBOSS™ 125 kVA



| SPECIFICATIONS | EBOSS™ 125-50 |
|--|-------------------------------|
| HYBRID ENERGY SYSTEM | ANA Energy Boss™ |
| MAXIMUM INTERMITTENT POWER OUTPUT | (Battery SOC Greater than 5%) |
| THREE-PHASE | 125 kVA / 100 kW |
| SINGLE-PHASE | N/A / N/A |
| FREQUENCY | 60 Hz |
| SIMULTANEOUS VOLTAGE | 120V (1Φ) • 208/480 (3Φ) |
| VOLTAGE REGULATION | Adjustable |
| MAX. INTERMITTENT AMP-LOAD @208V | 345 A |
| MAX. INTERMITTENT AMP-LOAD @480V | 150 A |
| MOTOR START RATING - 3 SECOND @208V | 532 A |
| MOTOR START RATING - 3 SECOND @480V | 231 A |
| MAXIMUM CONTINUOUS POWER OUTPUT | (Battery SOC greater than 0%) |
| GENERATOR | Airman SDG65 |
| GENERATOR CHARGE RATE | 65 kVA / 52 kW |
| THREE-PHASE OUTPUT | 62 kVA / 50 kW |
| SINGLE-PHASE OUTPUT | 2.4 kW x 2 |
| SIMULTANEOUS VOLTAGE | 120V (1Φ) • 208/480 (3Φ) |
| MAX. CONTINUOUS AMP-LOAD @208V | 167 A |
| MAX. CONTINUOUS AMP-LOAD @480V | 76 A |
| CONTROLS | |
| CONTROL PANEL | 10" Full Color Touch Screen |
| TELEMATICS | Generator & Energy Boss™ |
| ESG REPORTING | Yes |
| TECHNOLOGY | |
| BATTERY CHEMISTRY | Lithium Titanate Oxide (LTO) |
| BATTERY CAPACITY | 50 kWh |
| TOTAL BATTERY LIFE OR ENERGY THROUGHOUT | 4,000 MWh |
| CHARGE TIME (NO LOAD) | ≈ 1 Hour |
| INVERTER OUTPUT MAX | 100 kW |
| BATTERY LIFE* | |
| BATTERY TYPE | Lithium Titanate Oxide (LTO) |
| EST. CYCLE LIFE @ 77°F ENCLOSURE TEMPERATURES | 90K Cycles at 90% DOD |
| EST. CYCLE LIFE @ 100°F ENCLOSURE TEMPERATURES | 80K Cycles at 90% DOD |
| BATTERY LIFE (100°F @ 3 kW AVERAGE LOAD) | 20 Years |
| OPERATING TEMPERATURES | |
| INVERTER COLD START TEMPERATURE (MINIMUM) | 14°F |
| RUNNING OPERATING TEMPERATURE | -22°F to 130°F |
| ARCTIC PACKAGE OPERATING TEMP. (OPTIONAL) | -50°F to 130°F |
| FEATURES & OPTIONS | |
| TRAILER MOUNT | Available |
| SKID MOUNT | Available |
| PARALLEL CAPABILITY | Available |
| COLD WEATHER/ARCTIC PACKAGES | Available |

| WEIGHTS & DIMENSIONS | |
|---|------------------------------|
| L x W x H x (EBOSS ONLY) | ≈ 73.5" x 61" x 104.5" |
| EBOSS WEIGHT ONLY | 9,600 lbs |
| L x W x H (TRAILER AND GENERATOR) | 233" x 52" x 97" |
| TOTAL WEIGHT (WITHOUT/WITH FUEL) | ≈ 18,000 lbs |
| INTEGRAL FUEL TANK CAPACITY | 111 gal |
| GENERATOR COLD WEATHER OPTIONS | |
| BLOCK HEATER CCV HEATER | Available |
| FUEL FILTER HEATER FUEL TANK HEATER | Available |
| BATTERY BLANKET | Available |
| ENERGY BOSS COLD WEATHER OPTIONS | |
| Enclosure Heater | Available |
| Magnetic Ventilation Covers | Available |
| WARRANTY | |
| ENERGY BOSS™ ONLY | 2 Years |
| ENERGY BOSS™ WITH TRAILER & GENERATOR | 2 Years, 2000 Hours |
| MANUFACTURER BATTERY WARRANTY | 7 Years |
| SERVICE & SUPPORT | 24/7, 365 Days |
| TRAINING | Henderson, NV or On Location |

HOW THE ANA ENERGY BOSS™ BATTERY COMPARES



*Battery expected to retain 95% of its life after 7 years under 24/7 operation at 10% average load.

All specifications are subject to change without prior notice. Contact ANA Inc. for the most current information.

ANA ENERGY BOSS™ HYBRID ENERGY SYSTEMS BENEFITS

- Increased Fuel Efficiency
- Reduced Green House Gas Emissions
- Cost Effective High ROI
- Minimize Noise / Maximize Quiet Time
- Eliminate Maintenance Needs and Operational Hours by up to 75%
- Remote Access and Monitoring

SOLD AND SERVICED BY

ANA Nevada

1740 Raiders Way
Henderson, NV 89052

ANA S. California

11100 Hope Street
Cypress, CA 90630

ANA N. California

1315 Vinci Avenue
Sacramento, CA 95838

ANA South Carolina

1335 Hayne Street
Spartanburg, SC 29301



ANA, Inc.
Executive Office

1770 Raiders Way, Henderson, NV 89052

ANACORP.COM

(562) 450-3570 // sales@anacorp.com



ANA®

We make your world easier.